

EVO3[®] FORESTRY HELMET - SLIP RATCHET

EVO3[®] Helmet With Slip Ratchet Fitted With A Surefit[™] Visor Carrier: 20cm/8" Wire Gauze & Contour Ear Defenders: SNR=26

TECHNICAL SPECIFICATION

HEAD PROTECTION

INSTRUCTIONS FOR USE

- Fit helmet on head and fasten strap to ensure fit
- Adjust cups until comfortably seated over each ear and pull visor down
- For adequate protection this helmet must be worn with peak facing forward
- Ensure the helmet is adjusted to the size of the user's head

SHELL:
High Density Polyethylene (HDPE)



CHAMLON[™] SWEATBAND:
Egyptian cotton core with porous PU coating for maximum sweat absorption. PH neutral, dermatologically tested

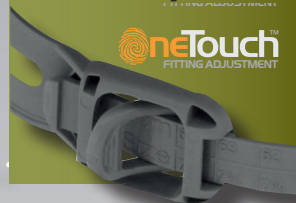
WEBBING HARNESS:
HDPE Strap & Webbing Clips with Polyester Webbing Straps

Surefit[™] Contour:
Helmet mounted ear defenders designed for long term comfort and increased protection. SNR=26



SLIP RATCHET:
One Touch[™] Slip Ratchet version of the EVO3[®] is so simple to fit that it can be adjusted with just one finger

neTouch[™]
FITTING ADJUSTMENT



CLEANING & MAINTENANCE

- The unit may be cleaned with soap and warm water and dried with a soft cloth
- The helmet should not be cleaned with chemical or abrasive cleaners
- The helmet should be stored out of direct sunlight
- The helmet should be stored away from chemicals and extremes of temperature

CONFORMITY

- Helmet conforms to EN397 & ANSI Z89
- Ear defenders conform to EN352-3
- Visor conforms to EN1731
- Meets the retro reflective performance requirements of EN12899 when fitted with CR2 Reflective kit
- Meets optional Molten Metal Splash performance
- EC Type-Examination Certificate number 658384
- Available unvented
- Company personalisation available by printing



MANUFACTURING FOR SAFETY
WWW.JSP.CO.UK

UKSALES@JSP.CO.UK
TEL: +44 (0)1993 826050



EVO3[®] FORESTRY HELMET - SLIP RATCHET

EVO3[®] Helmet With Slip Ratchet Fitted With A Surefit™ Visor Carrier: 20cm/8" Wire Gauze & Contour Ear Defenders: SNR=26

TECHNICAL SPECIFICATION

HEAD PROTECTION

DIMENSIONS OF OUTER PACKAGING

Quantity: 14

Weight: 11.5kg (Approx.)



HEIGHT:
365mm

WIDTH:
390mm

LENGTH:
620mm



HELMET FEATURES

EN STANDARD	EN397 EN352-3	Yes Yes
PERFORMANCE	Impact Resistance	Yes 50 Joules
TEMPERATURE RESISTANCE	Molten Metal (MM) -40°C	Yes Yes
SHELL MATERIAL	HDPE Recyclable	Yes Yes
HARNES MATERIAL	HDPE LDPE Textile	Yes Yes Yes
OPTIONS	Universal Accesories Reflective CR2 option Integrated Eyewear	Yes Yes Yes
HARNES SYSTEM OPTIONS	JSP 3D Slip Ratchet 6 pts	Yes Yes Yes
CHINSTRAP	4 pts	Yes
LOGO OPTIONS	Front Rear Side MOQ Logo Individual Name	Yes Yes Yes 10 Yes

LIMITATIONS OF USE

Protection will only be offered if the helmet is fitted correctly

Ear pads may deteriorate with use and should be examined at frequent intervals

If the ear defender is to be worn for long periods the noise level must be reduced to 80dB

Spectacle frames and hair between the ear pads and the head may affect the performance of the ear defender

Hearing Protection should be used in accordance with the European Physical Agents (Noise) Directive 2003/10/EC

Any helmet subjected to severe impact should be replaced immediately. Do not apply paint, solvents or adhesive labels except in accordance with instructions from the manufacturer

The harness & ear pads, when in contact with the skin may cause allergic reactions to susceptible individuals. If this occurs leave the hazard area, remove the helmet and seek medical advice

The attention of users is also drawn to the dangers of modifying or removing any of the original component parts, other than as recommended by the manufacturer

DIMENSIONS OF HELMET

Size: 530 - 640mm

Weight: 824g (Approx.)

HELMET COLOURS



01 White 02 Yellow 03 Green 05 Blue 06 Red 08 Orange



MANUFACTURING FOR SAFETY
WWW.JSP.CO.UK

UKSALES@JSP.CO.UK
TEL: +44 (0)1993 826050



Issued 09/01/18, V6