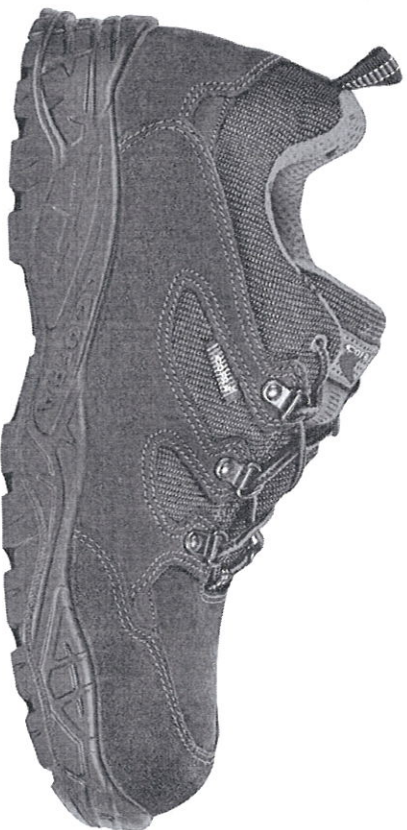


# MAP S1 P SRC



**STANDARD:** EN ISO 20345:2011

**UPPER:** suede leather and breathable fabric

**EXTERNAL LINING:** breathable fabric

**INTERNAL LINING:** SANY-DRY® 100% polyester fabric, three-dimensional, breathable, it absorbs and releases the moisture, abrasion resistant

**FOOTBED:** EVANIT, made of EVA and nitrile special compound, with high bearing capacity and variable thickness (12mm - 8mm - 3,8mm). Thermoformed, anatomic, punched and coated with highly breathable fabric. Antistatic thanks to a specific treatment on the surface and to seams made of conductive yarns

**SOLE:** dual-density polyurethane

**TOE CAP:** steel resistant to 200 J

**MIDSOLE:** non metallic APT PLATE - Zero Perforation

**WIDTH:** 11 Mondopoint

**PERFORMANCES AND TECHNICAL FEATURES:** Italian Leather

**SIZES:** 39-47 (EU), 6-12 (UK)